

MULTIFILO®

NEW

General information

MULTIFILO® is a combination of one or more layers of chopped strand mat (CSM) stitched on one of both sides of a layer of long fiber mat.

Types of MULTIFILO®

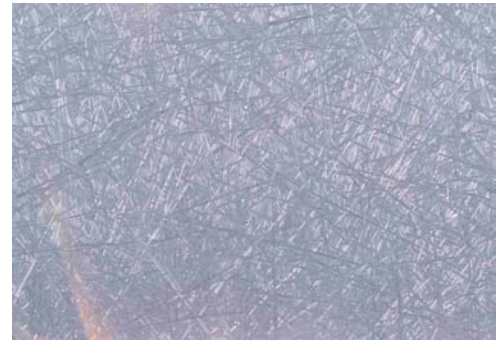
1. S.../UF... = a combination of one layer of chopped strand mat (CSM), stitched on one layer of long fiber mat.
2. S.../UF.../S... = a combination of two layers of chopped strand mat (CSM), stitched on both sides of the long fiber mat.

Methods of use

MULTIFILO® is recommended for the production of composites in RTM: Pressure and Vacuum injection, Infusion and Compression moulding.

Advantages

- ✓ 100% glass fiber, without any synthetic core.
- ✓ Wets out very fast in RTM and Vacuum Processes.
- ✓ Provides high physical properties, especially flexural strength, stiffness, shear-and compression strength.
- ✓ Is hot pre-formable.
- ✓ It can be laminated and postcured with phenolic resins at high temperature due to its 100% glass fiber composition.



MULTIFILO®

End uses

- ✓ Boats and jet skis
- ✓ Chemical Engineering
- ✓ Automotive parts
- ✓ Panels
- ✓ Bath and shower tubs

Standard Product List

TYPE	WIDTH (cm)	CSM (g/m ²)	LONG FIBER MAT (g/m ²)	CSM (g/m ²)	TOTAL WEIGHT (g/m ²)
S375-UF450	125 or 250	375	450		825
S450-UF450	125 or 250	450	450		900
S600-UF450	125 or 250	600	450		1050
S375-UF450-S375	125 or 250	375	450	375	1200
S450-UF450-S450	125 or 250	450	450	450	1350
S600-UF450-S600	125 or 250	600	450	600	1650

Other weights & combinations available to order.

Without liability.

09/05